

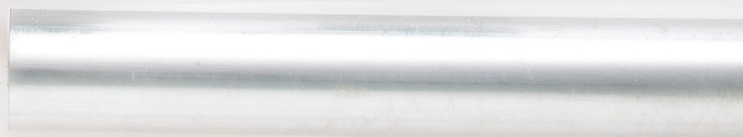
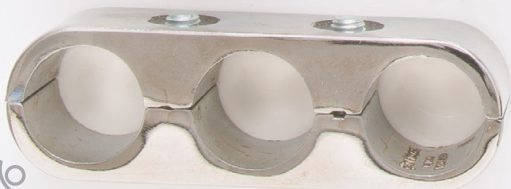
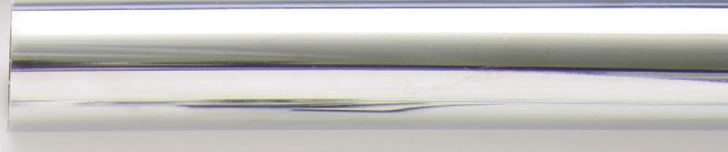
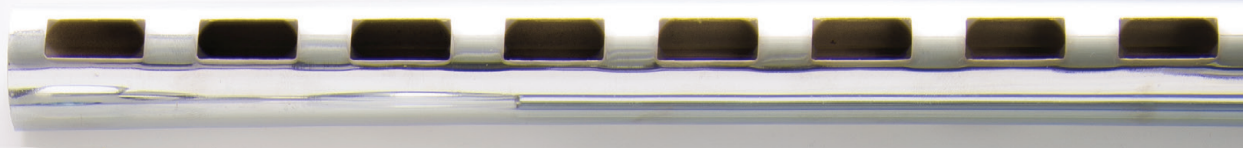
VERSATILE - TUBE AND CLAMP SYSTEM

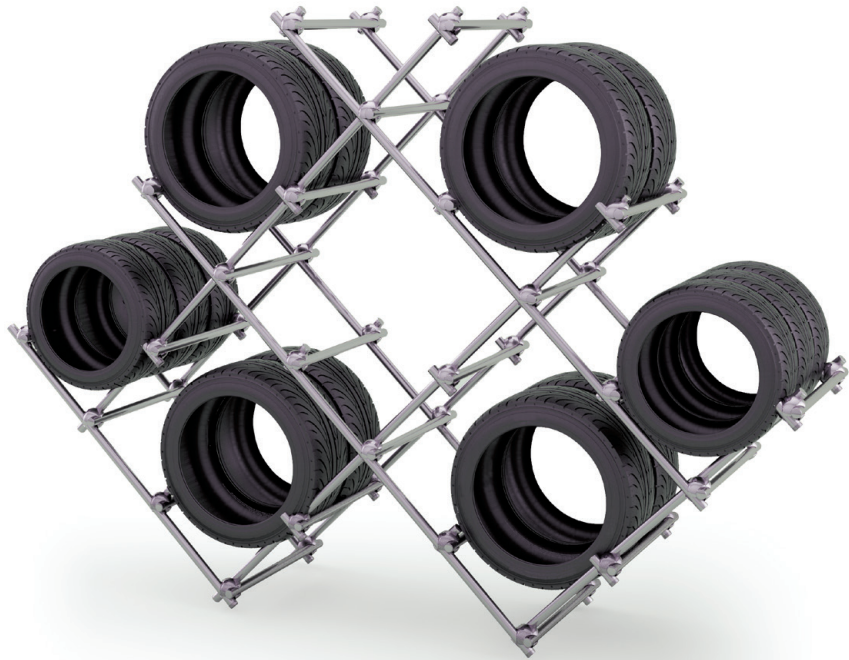


TRICLAMP

Simple concept, effective solutions

Mailbox
Stamford Products Limited





What is Triclamp?

You're only limited by your own imagination! Triclamp's components and accessories are used across thousands of different applications from backroom storage frameworks, jigs, shop fitouts and display stands.

It's a simple yet effective tube and clamp system.

Our internal sales team are trained to give advise and guidance on the products for your individual application:

Tel: 0161 330 5577

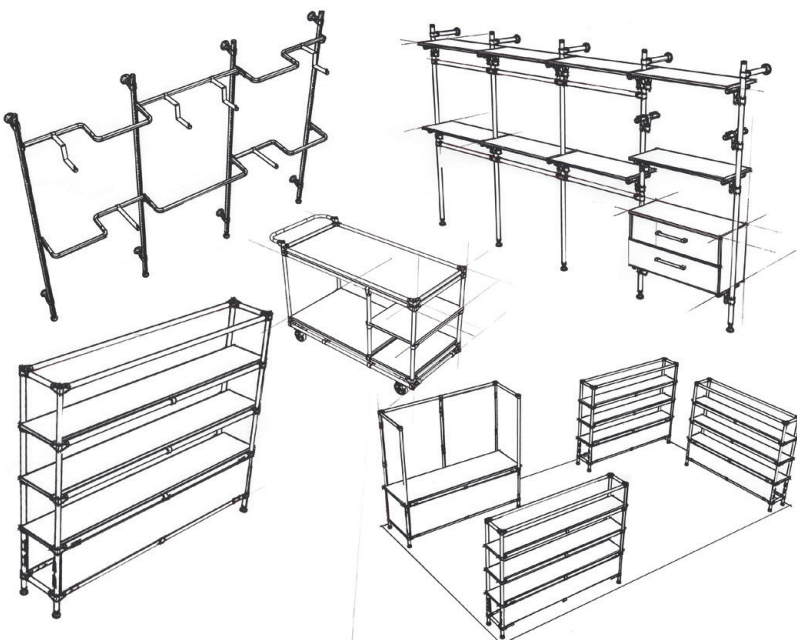
Email: triclamp@mailboxproducts.co.uk

Designed by you!

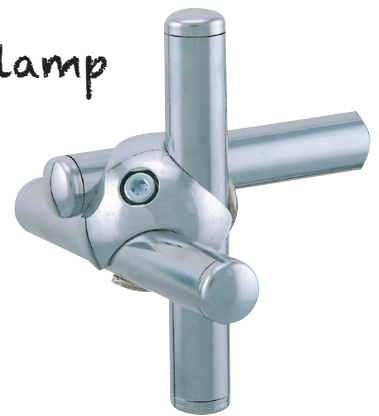
Manufactured in the UK from the very best materials, Triclamp offers the ultimate construction tool for generating ideas.

Innovative design and creation ability

Design solutions



Triclamp



GS clamp









Triclamp & GS System Clamps

Triclamps for round tube are universal connectors which are extremely versatile and very strong.



DESIGN SPECIFICATION:

MATERIAL:

Die-cast light alloy.

STOCK FINISHES:

Cut Back, Polished Silumin, Chrome and Silver Grey.

WEIGHT LOADING:

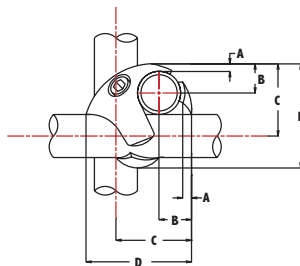
The following figures are based on silumin clamps and Zinc coated, lacquered tube.

25mm Triclamp 180kg per clamp GS (150) 120kg per clamp.

32mm Triclamp 230kg per clamp GS (150) 150kg per clamp.

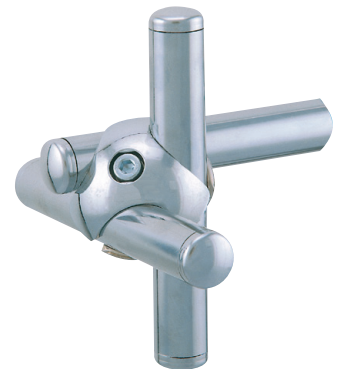
101 THREE WAY CLAMP:

This clamp forms the basis of the Triclamp system.



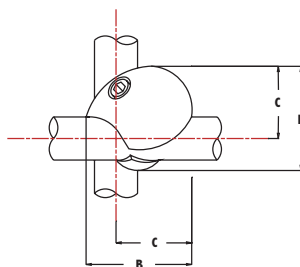
CLAMP DIMENSIONS:

	13mm	25mm	32mm
A:	4	5	8
B:	10	18	22
C:	23	43	57
D:	34	61	72



107 TWO WAY CLAMP:

Joins two tubes together where the third tube is not required.



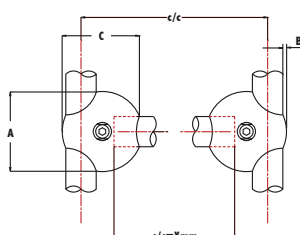
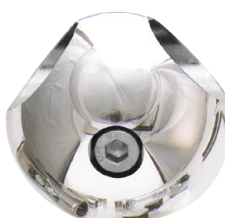
CLAMP DIMENSIONS:

	25mm
B:	61
C:	43



111 "T" CLAMP:

Joins two pieces of tube together at right angles.



CLAMP DIMENSIONS:

	25mm	32mm
A:	66	80
B:	3	4
C:	64	76
X:	50	60

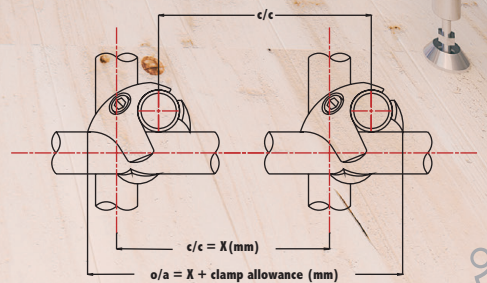




TUBE ALLOWANCE 101:

TUBE SIZE CALCULATION:

CLAMP SIZE:	13	25	32
CLAMP ALLOWANCE:	35	63	81

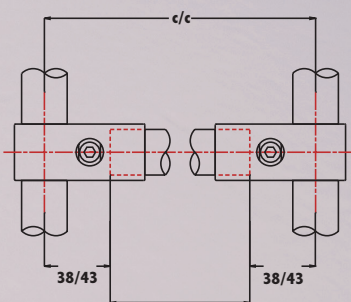




TUBE ALLOWANCE 150-153 & 156-158:

TUBE SIZE CALCULATION:

CLAMP SIZE:	25	32
CLAMP ALLOWANCE:	76	86



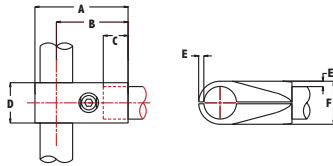
Tube Length + c/c - Clamp Allowance

Triclamp & GS System Clamps



150 THREE WAY CLAMP:

Joins two pieces of tube together at right angles.



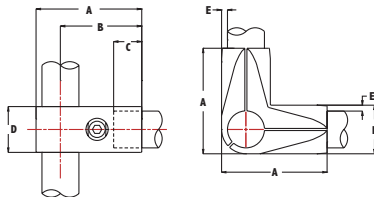
CLAMP DIMENSIONS:

	25mm	32mm
A:	71.5	84
B:	55	64
C:	19	22
D:	31	39
E:	4	5
F:	33	42



151 FOUR WAY CORNER CLAMP:

Joins three pieces of tube together at right angles in a corner configuration.



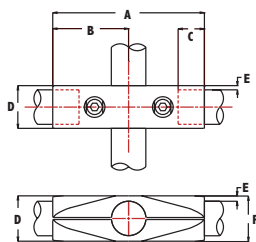
CLAMP DIMENSIONS:

	25mm	32mm
A:	71.5	84
B:	55	64
C:	19	22
D:	31	39
E:	4	5
F:	33	42



152 FOUR WAY CROSS CLAMP:

Joins three pieces of tube together at right angles in a cross configuration.



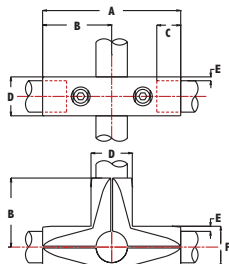
CLAMP DIMENSIONS:

	25mm	32mm
A:	110	128
B:	55	64
C:	19	22
D:	31	39
E:	4	5
F:	33	42



153 FIVE WAY CLAMP:

Joins four pieces of tube together at right angles in a cross/'T' configuration.

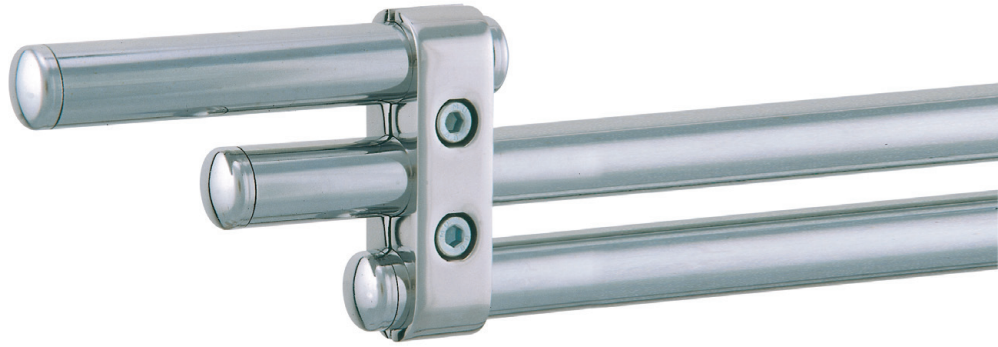


CLAMP DIMENSIONS:

	25mm	32mm
A:	110	128
B:	55	64
C:	19	22
D:	31	39
E:	4	5
F:	33	42

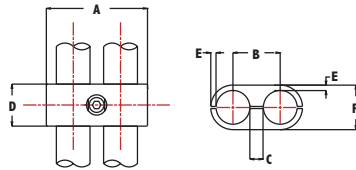


Triclamp & GS System

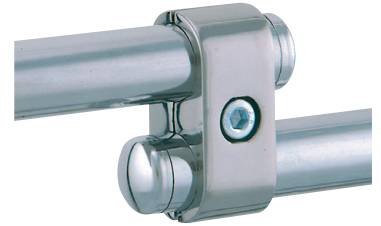


154 DOUBLE PARALLEL CLAMP:

Joins two parallel tubes. Can be used with straight or curved tubes to form archways.

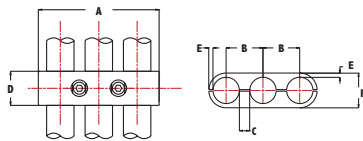


CLAMP DIMENSIONS:		
	25mm	32mm
A:	68	84
B:	35	42
C:	10	12
D:	29	34
E:	4	5
F:	33	42

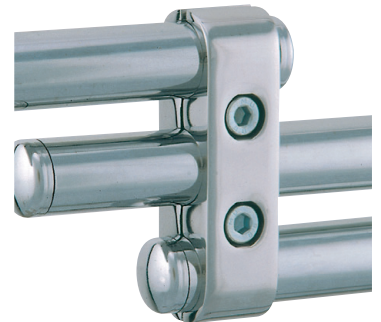


155 TRIPLE PARALLEL CLAMP:

Joins three parallel tubes. Can be used with straight or curved tubes.

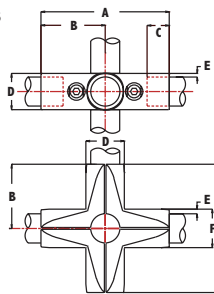


CLAMP DIMENSIONS:		
	25mm	32mm
A:	103	126
B:	35	42
C:	10	12
D:	29	34
E:	4	5
F:	33	42



156 SIX WAY CROSS CLAMP:

Joins five pieces of tube at right angles in a double cross configuration.

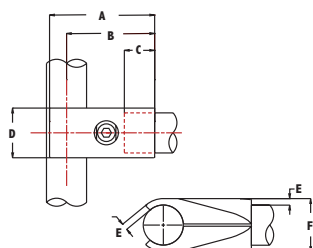


CLAMP DIMENSIONS:		
	25mm	32mm
A:	110	128
B:	55	64
C:	19	22
D:	31	39
E:	4	5
F:	33	42



157 THREE WAY CLAMP FOR SLOTTED TUBE:

Joins two pieces of tube together at right angles.

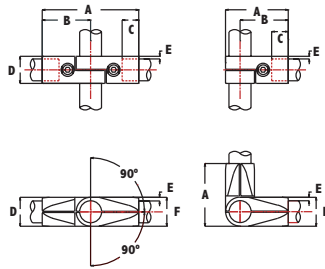


CLAMP DIMENSIONS:		
	25mm	32mm
A:	67	78
B:	55	64
C:	19	22
D:	31	39
E:	4	5
F:	33	42



158 MULTI ANGLE CLAMP:

Joins two pieces of tube at any angle between 90° and 180° to an upright.



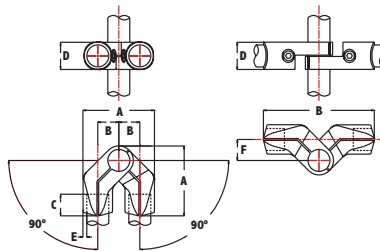
CLAMP DIMENSIONS:

	25mm
A:	110
B:	55
C:	19
D:	31
E:	4
F:	33



159 MULTI ANGLE CLAMP:

Joins two pieces of tube at any angle between 0° and 180° to an upright.



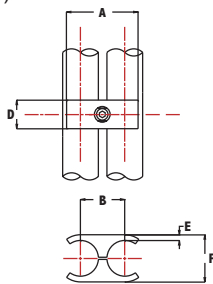
CLAMP DIMENSIONS:

	25mm
A:	81
B:	24
C:	19
D:	31
E:	4
F:	18



141 PARALLEL CLAMP:

Joins two parallel tubes. (Light duty only)



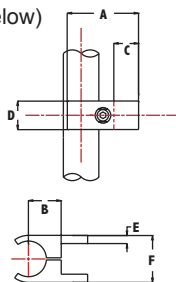
CLAMP DIMENSIONS:

	25mm	32mm
A:	50	64
B:	31	39
C:	20	25
D:	4	5
E:	33	42



143 PANEL CLAMP:

Used in conjunction with inserts 147 & 148 (below) this clamp supports boards 3-16mm thick.



CLAMP DIMENSIONS:

	25mm
A:	50
B:	23
C:	17
D:	20
E:	4
F:	33



147, 148 SELF ADHESIVE INSERTS:

4mm thick (147) for boards 16-19mm
 6mm thick (148) for boards 9-16mm
 Use 147 and 148 together for boards 3-8mm



PANEL SIZE CALCULATION:

Deduction from centre to centre tube measurements to calculate panel sizes:

25mm 142	deduct 43mm
25mm 144	deduct 55mm
25mm 145/146	deduct 45mm
32mm 145	deduct 50mm

Triclamp & GS System tubing

Manufactured from high quality cold rolled mild steel electro-welded, supplied in standard lengths or cut to size.

202 ZINC COATED & LACQUERED TUBES:



TUBE DIMENSIONS:

DIA	WALL	LENGTH
25mm	1.2mm	6m
32mm	1.6mm	6m

212 COLOUR COATED TUBES:

Colour coated tube is cut to size from standard lengths prior to colour coating.



TUBE DIMENSIONS:

DIA	WALL	LENGTH
13mm	0.75mm	6m
25mm	1.2mm	6m
32mm	1.6mm	6m

204 CHROME PLATED:



TUBE DIMENSIONS:

DIA	WALL	LENGTH
13mm	0.75mm	3m
25mm	1.2mm	3m
32mm	1.2mm	3m

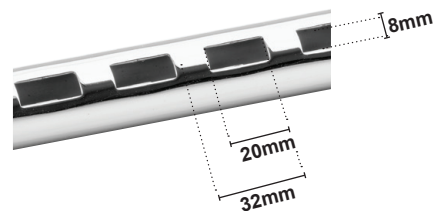
211 TWO WAY SLOTTED TUBES



TUBE DIMENSIONS:

DIA	WALL	LENGTH
25mm	1.5mm	2.5m

SLOTTED TUBE PITCH:



CUT LENGTH SERVICE AVAILABLE

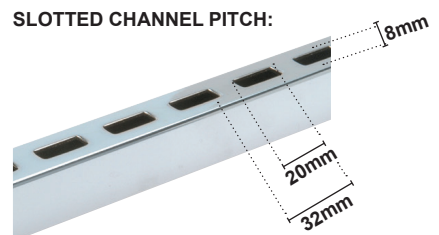
220 SLOTTED CHANNEL:



TUBE DIMENSIONS:

DIA	WALL	LENGTH
25mm	1.5mm	2.5m

SLOTTED CHANNEL PITCH:



CUT LENGTH SERVICE AVAILABLE

Stock finishes & Strength data

The ultimate construction tool for generating your design ideas.

STRENGTH DATA:

For round tube with a wall thickness of 1.2mm load is in kilos per single horizontal tube.

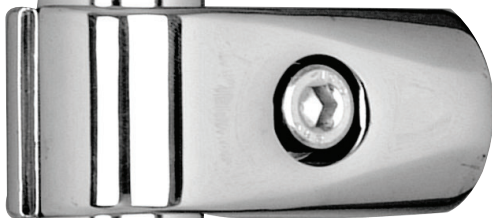
Formula for load and span for horizontal tubes allowing a deflection of 1.5% of the span.

TUBE DIMENSIONS:

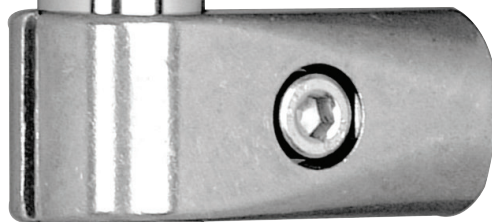
Length	25mm	32mm
0.5m	182	368
0.75m	120	245
1.0m	91	184
1.25m	73	147
1.5m	60	123
1.75m	52	105
2.0m	45	92
2.25m	40	82



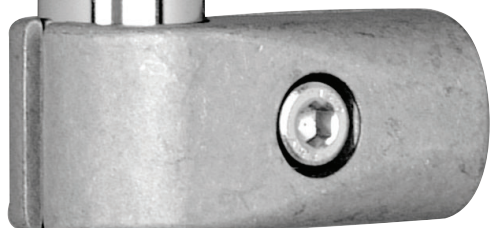
Silver Grey



Chrome



Polished Silumin
(Ball burnished)



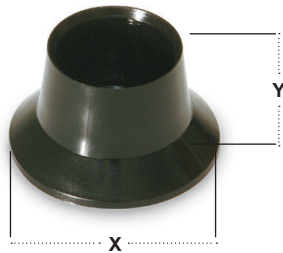
Cut Back



Triclamp & GS System Accessories



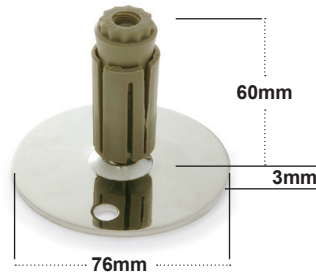
311 PLASTIC FOOT:



Pushes onto tube to protect floor surface. (25mm and 32mm)
Finish: 25mm Black. 32mm Black.

	X	Y
25mm	46mm	26mm
32mm	60mm	30mm

501 METAL BASE PLATE:



Secures structures by floor fixing with two holes for No 10 screws.

Expanding bush secures plate in tube. (25mm and 32mm)
Finish: BZP, Chrome.

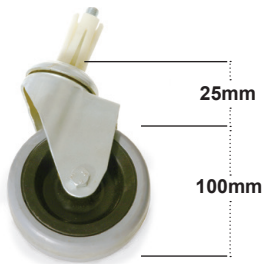
901 ADJUSTABLE FOOT:



For use where accurate levelling or adjustability is essential.

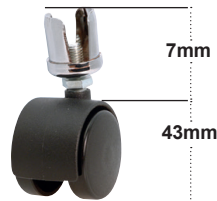
25mm - 25mm height variation
32mm - 40mm height variation
Finish: BZP with Black Foot.

519 RUBBER TYRE CASTOR:



Swivel wheel castor sold in sets of four. 100mm diameter wheel. 70 Kgs loading per castor. Locks into tube by expanding bush. Supplied with or without brakes (25mm and 32mm)

528 TWIN WHEEL CASTOR:



Light duty swivel twin castor sold in sets of four. Wheel diameter 43mm. Loading per castor 30Kgs. Push fits into end of tube (25mm).

911 CURTAIN RING:



25mm and 32mm in chrome finish.

300 METAL END STOP:



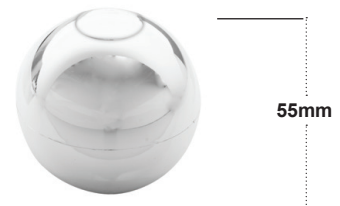
High quality metal end stop for round tube. Push fits into the tube end for a neat appearance. Flush fitting. (25mm and 32mm)
Finish: Chrome and Steel.

301 PLASTIC END STOP:



Push fit into round tube for neat appearance. (13mm, 25mm and 32mm)
Finish: 13mm Black. 25mm & 32mm Silver, Black and Grey.

361 DECORATIVE BALL:

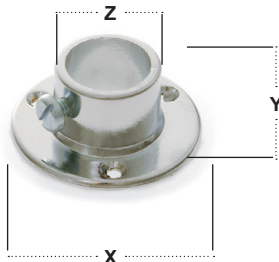


Push fits onto tube end for decorative finish (25mm)
Finish: Chrome, Black and White.

591 METAL WALL BRACKET:

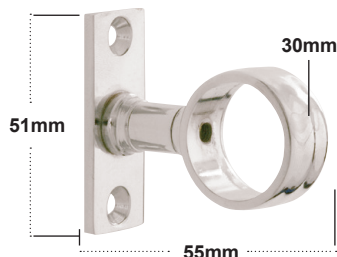


Tube pushes into wall bracket and is secured by a grub screw.
 Three fixing holes in base for No 8 screws. (25mm and 32mm)
 Finish:
 25mm BZP and Chrome. 32mm Chrome.



	X	Y	Z
25mm	59mm	25mm	31mm
32mm	70mm	39mm	38mm

955 CANTILEVER LOOP BRACKET:



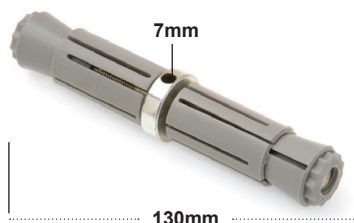
For fixing round tubes to walls, has two countersunk holes for No 8 screws (25mm and 32mm)
 Finish: Chrome, Silver Grey.

122 SOCKET HEAD SPIGOT:



For joining straight round tubes with the same wall thickness socket screw fitting secured by Allen key.
 Item 164 (25mm).

124 EXPANDING DISPLAY SPIGOT:



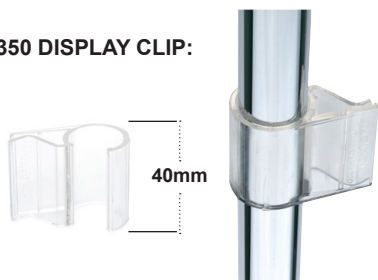
Connects tubes in load bearing applications and with different wall thicknesses. After securing by hand, tighten by inserting rod and turning to secure in position. (25mm and 32mm).

126 LIGHTWEIGHT ALUMINIUM SPIGOT:



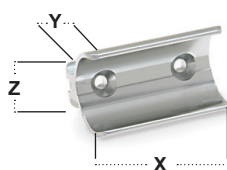
For joining straight round tubes with the same wall thickness. Lightweight applications. Secured by Allen key Item 164 (25mm).

350 DISPLAY CLIP:



Polycarbonate clip for use with lightweight panels, boards, display card and perspex. Clip fits onto tube after structure is completed (25mm)
 For boards up to 7mm thick*.
 Finish: Transparent Polycarbonate.

903 TRICLAMP CLIP:



Secures panels, boards and profiles to round tube. Has two countersunk holes to take No. 8 screws for fixing into panel edges. Snaps tightly onto tube.
 (25mm and 32mm).
 Finish: Anodised Silver and Silver Grey.

382 FILLER TUBE:



Completes the third socket in the 101 Triclamp when only two main tubes are being used. End stops are extra.

***PANEL SIZE CALCULATION**

Deduction from centre to centre tube measurement.

	X	Y	Z
25mm	48mm	9mm	16mm
32mm	60mm	6mm	16mm

Dia	L
13mm	35mm
25mm	65mm
32mm	80mm

350 DISPLAY CLIP:

Deduct 31mm

903 TRICLAMP CLIP:

25mm deduct 43mm. 32mm deduct 44mm.

Triclamp & GS System Accessories



SYSTEM 13:

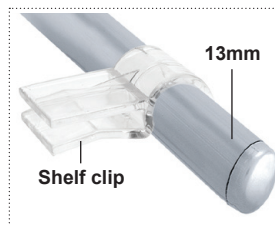
A 13mm tube and clamp system.



549 SHELF CLIP:

Clip for 3mm glass, perspex, board, shelves or panels.

Finish: Transparent Polycarbonate.



Pushes onto shelf and clips over 13mm tube. (13mm)



ALLEN KEY:



161 ALLEN KEY (6mm)

Fits all clamps other than 13mm 101, 141, and 143.

164 ALLEN KEY (4mm)

Fits 122, 126, 141 and 143.

163 ALLEN KEY (3mm)

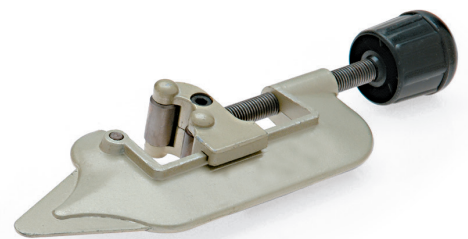
Fits 13mm 101.

165 FITTERS KEY (6mm):



Fits 25mm & 32mm clamps.

907 TUBE CUTTER:



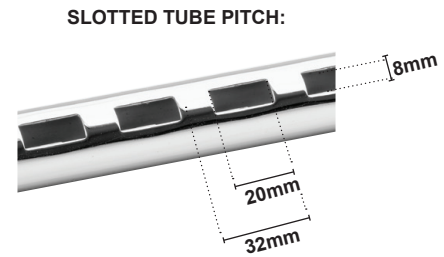
Simple method of cutting small quantities of tube by hand. Cuts 13, 25 and 32mm tube.





Triclamp & Slotted Tube Accessories

211 tube & 220 slotted channel



CUT LENGTH SERVICE AVAILABLE

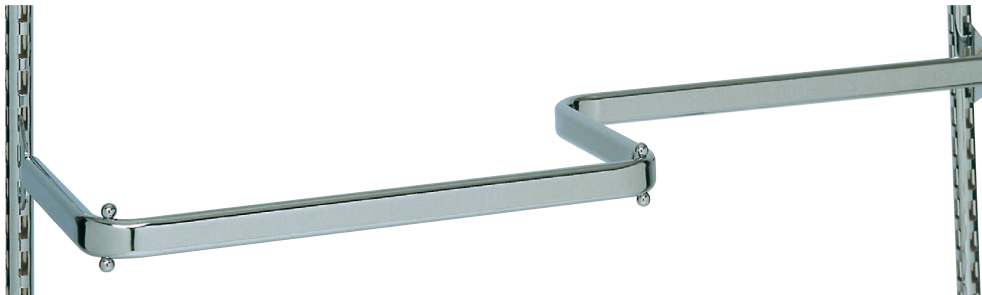
840 ACCESSORY RAIL:

1000mm centres - Chrome finish



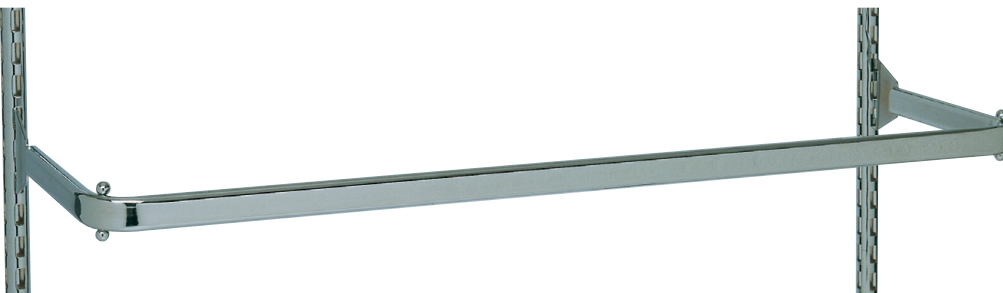
839 CO-ORDINATE RAIL:

1000mm centres x 300mm deep reversible - Chrome finish



286 HANGING RAIL:

1000mm centres 300mm deep reversible - Chrome finish



845 STRAIGHT ARM:

Locates on any hanging rail. 375mm long - Chrome finish.

841 11 BALL ARM:

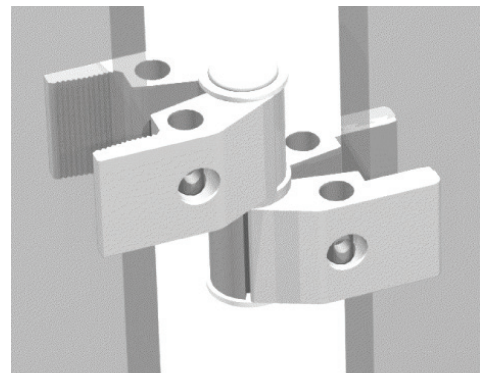
Locates on any hanging rail - Chrome finish.



NEXO[®] Connector System

A versatile clamp system that will hold panels at any angle from 45° - 180°

- Easy to assemble
- Clamps push on to a pivot pin and slide onto your board, where they are tightened with an Allen key.
- Manufactured from machined aluminium with steel nuts and bolts.



NX1 CLAMP:

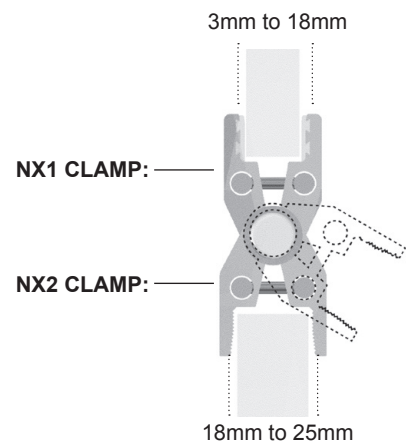


For panels 3mm - 18mm.
Colour: Silver.

NX2 CLAMP:



For panels 18mm - 25mm.
Colour: Silver.



PIVOT PINS:



NX920 - 2 way 54mm
NX930 - 3 way 81mm
NX940 - 4 way 108mm

NX5 FIXED PARALLEL CLAMP:



For panels 12mm - 18mm
Colour: Silver.

NX960 ALLEN KEY



Fits all clamps.

NX961 ALLEN DRIVER:

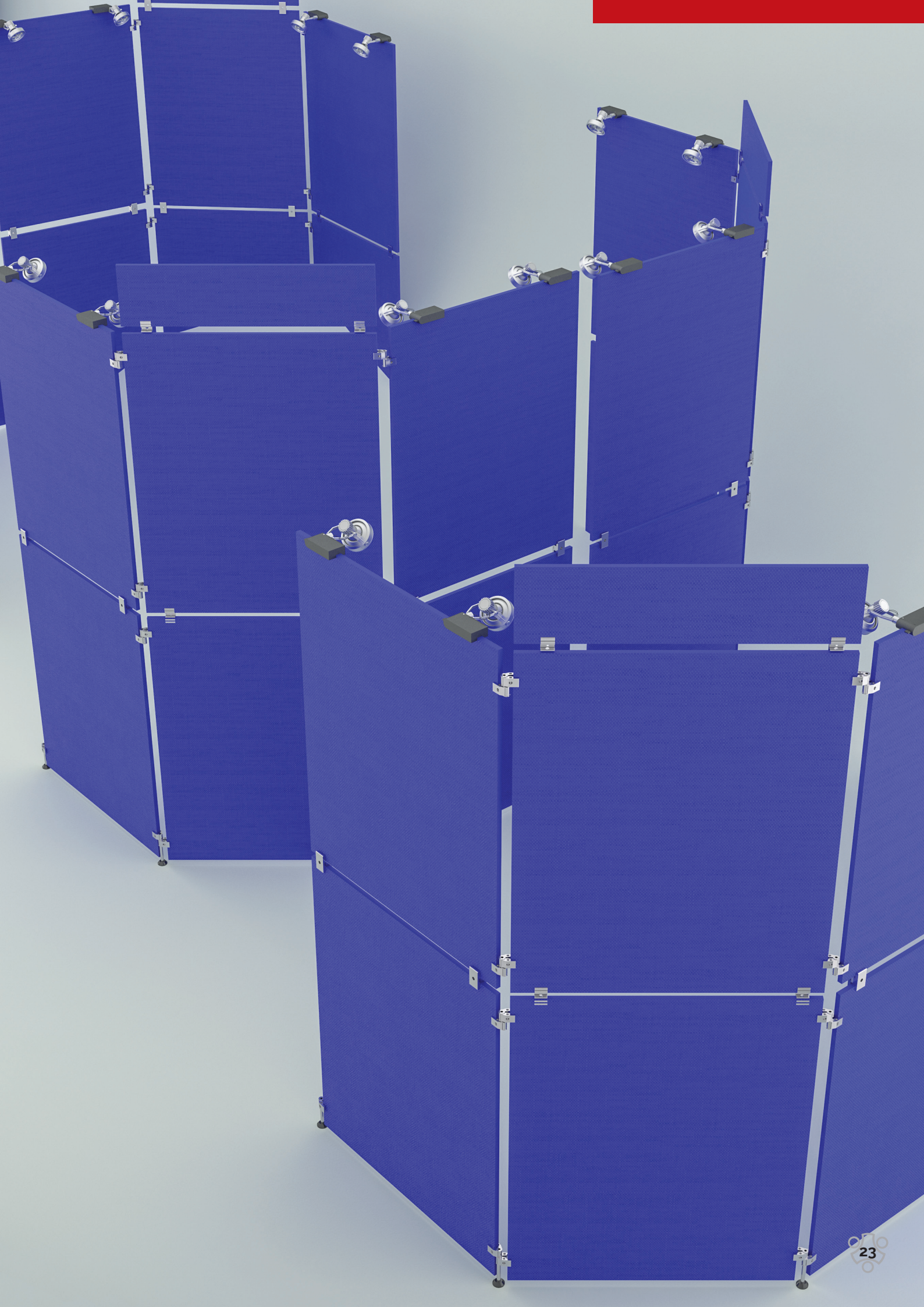


Fits all clamps.

NX910 ADJUSTABLE FOOT:



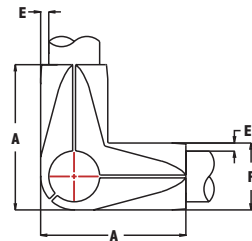
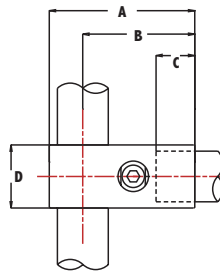
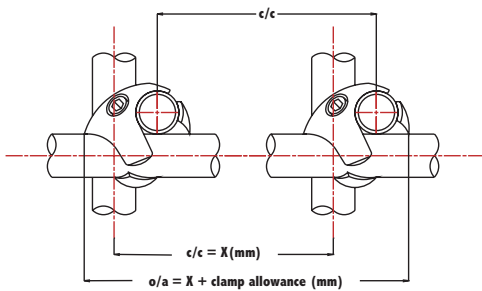
For fitting onto the end of a pivot pin
Colour: Black.





TRICLAMP

Simple concept, effective solutions



Mailbox: Stamford Products Limited

Bayley Street, Stalybridge, Cheshire, SK15 1QQ.

Tel: 0161 330 5577 **Fax:** 0161 330 5576

Email: triclamp@mailboxproducts.co.uk

Web: www.mailboxproducts.co.uk

Mailbox
Stamford Products Limited